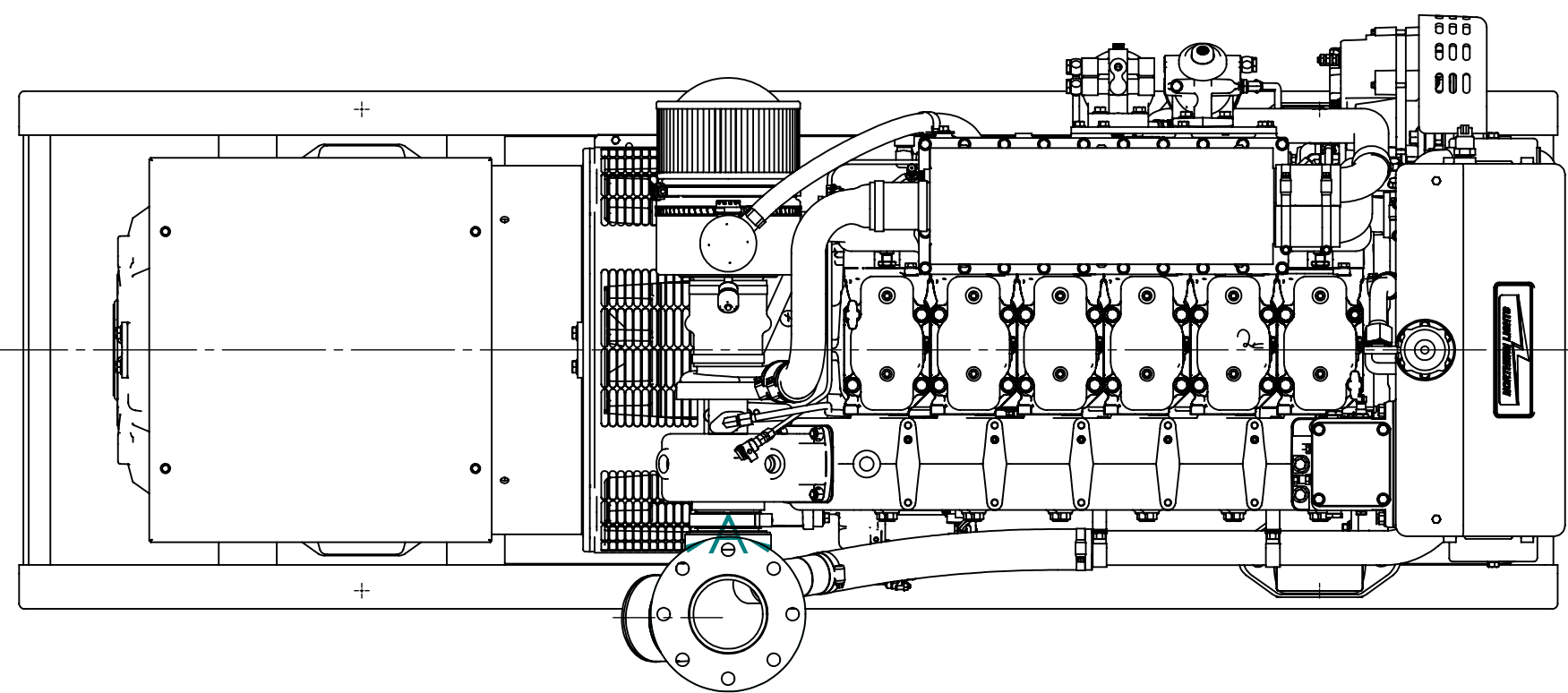


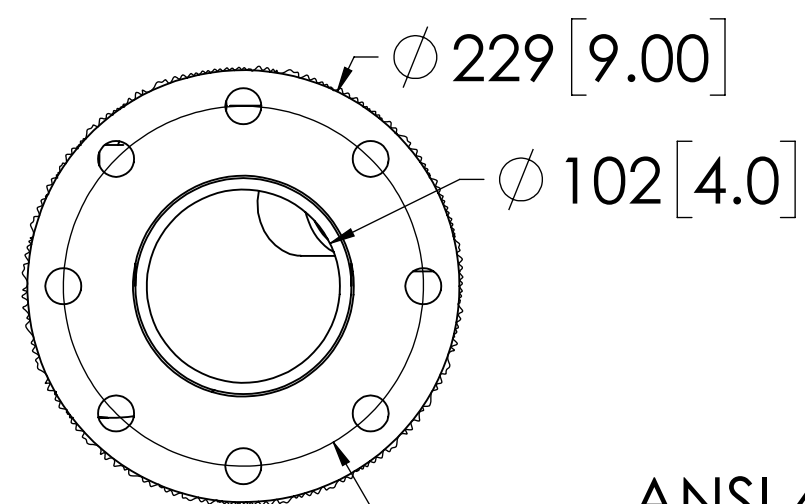
MODELS	DESCRIPTION	APPROX. WT. LBS [KG]
M6105A1.5	150KW @ 1500 RPM (50HZ) HEAT EXCHANGED	3545 [1608]

*NOTE: WEIGHT INCLUDES OIL, BUT NOT COOLANT. VALUES ARE APPROXIMATIONS AND ARE SUBJECT TO CHANGE. PLEASE CONTACT NLI TO BE SURE YOU HAVE THE MOST CURRENT REVISION.

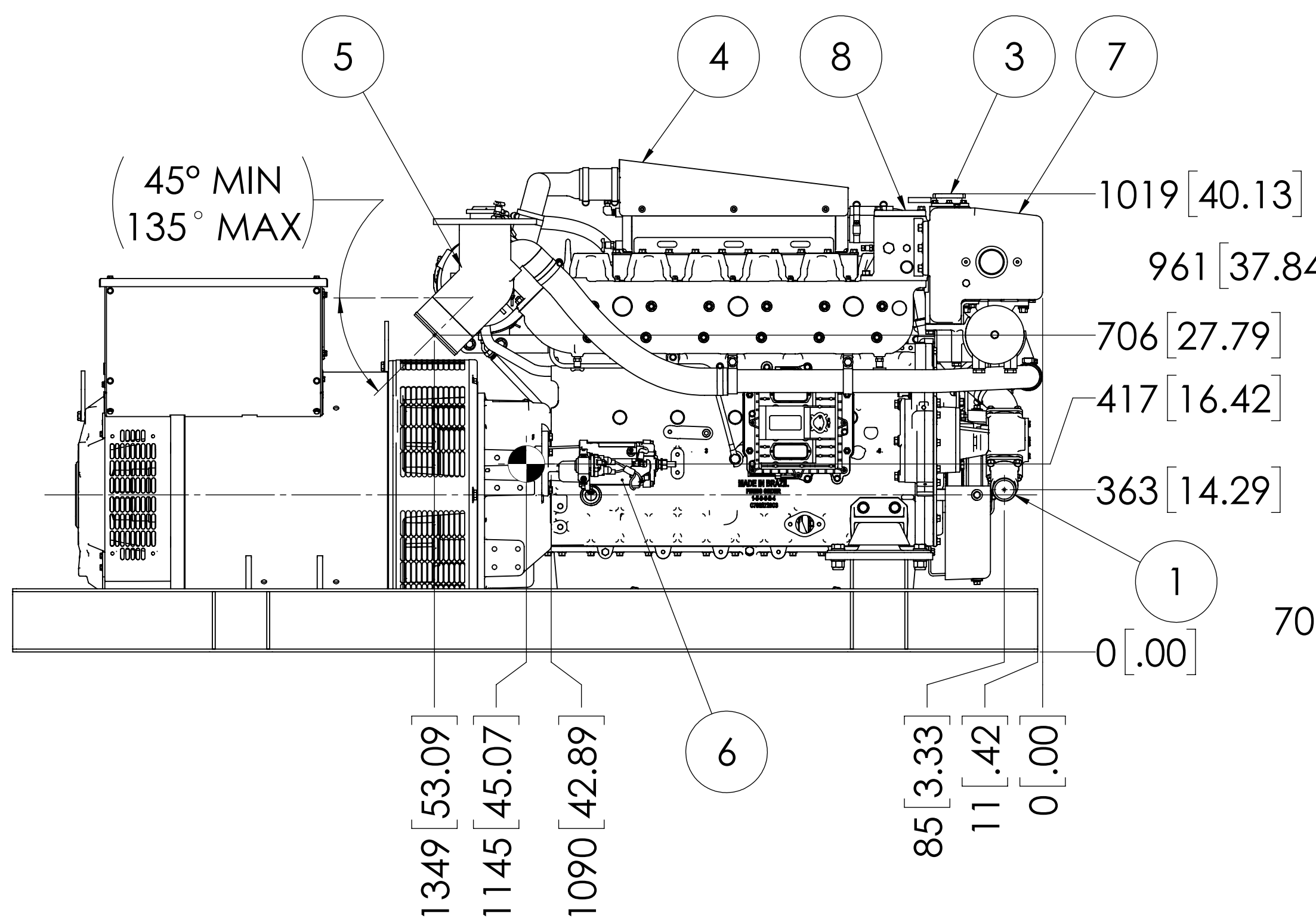
ITEM	DESCRIPTION	ITEM	DESCRIPTION
1	SEA WATER INLET ϕ 51 [2.0] H.B.	14	ENGINE OIL FILL
2	HEAT EXCHANGER	15	FUEL RETURN PORT 3/8" NPT
3	COOLANT FILL	16	FUEL SUPPLY PORT 3/8" NPT
4	AFTERCOOLER	17	ENGINE OIL DRAIN PORT 1/2" NPT
5	WET EXHAUST ELBOW ϕ 127 [5.0]	18	ALTERNATOR
6	ELECTRIC STARTER MOTOR	19	DRY EXHAUST ELBOW (OPTIONAL)
7	EXPANSION TANK	20	
8	THERMOSTAT HOUSING	21	
9	FUEL/WATER SEPARATOR	22	
10	PRIMARY FUEL FILTER	23	
11	OIL FILTER	24	
12	AIR FILTER & COALESCING FILTER	25	
13	ENGINE OIL DIPSTICK	26	



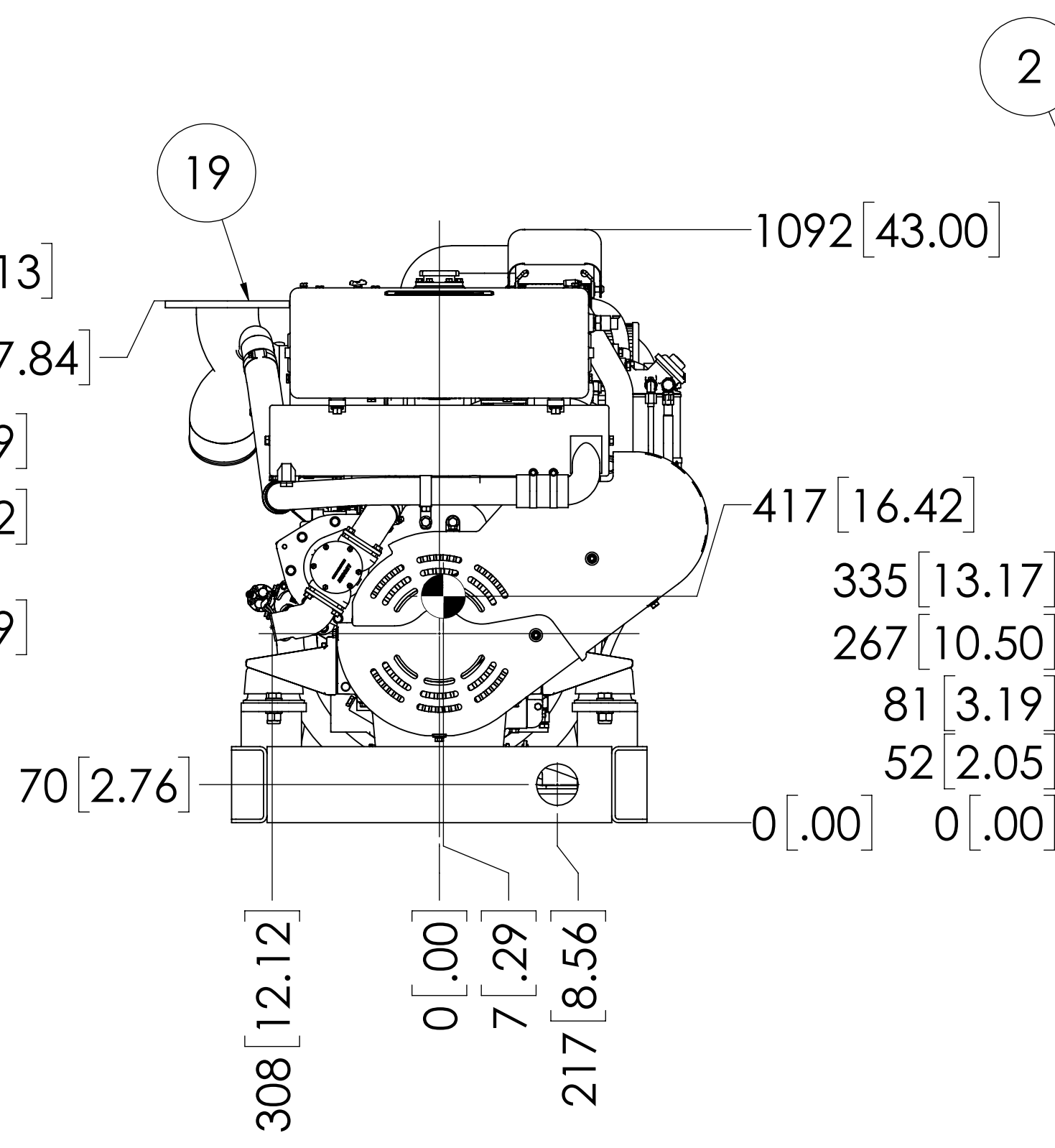
TOP



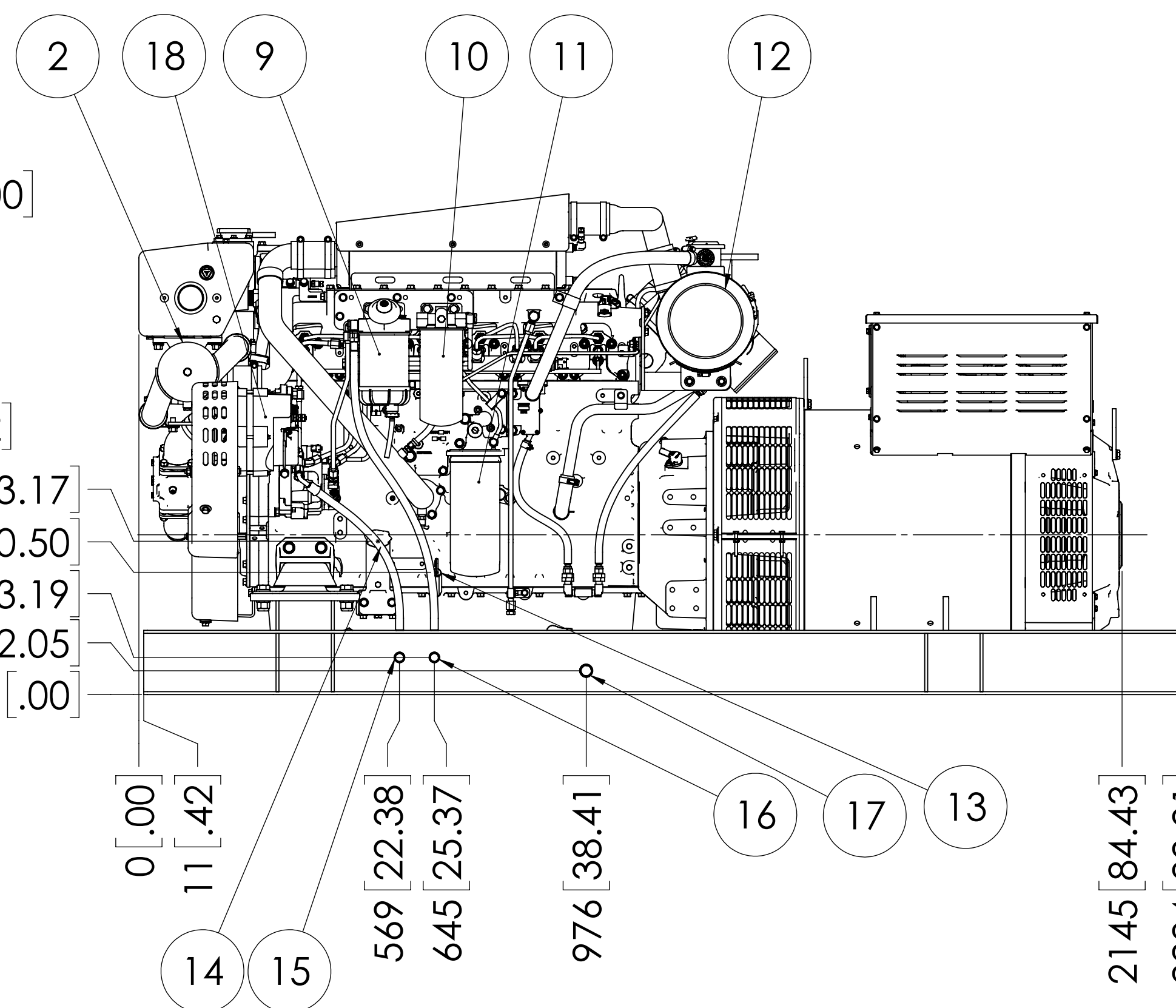
ANSI 4" 150# FLANGE
8x ϕ 0.75" THRU HOLES ON 7.5" B.C.
DETAIL A
OPTIONAL DRY EXHAUST FLANGE
SCALE 1 : 4



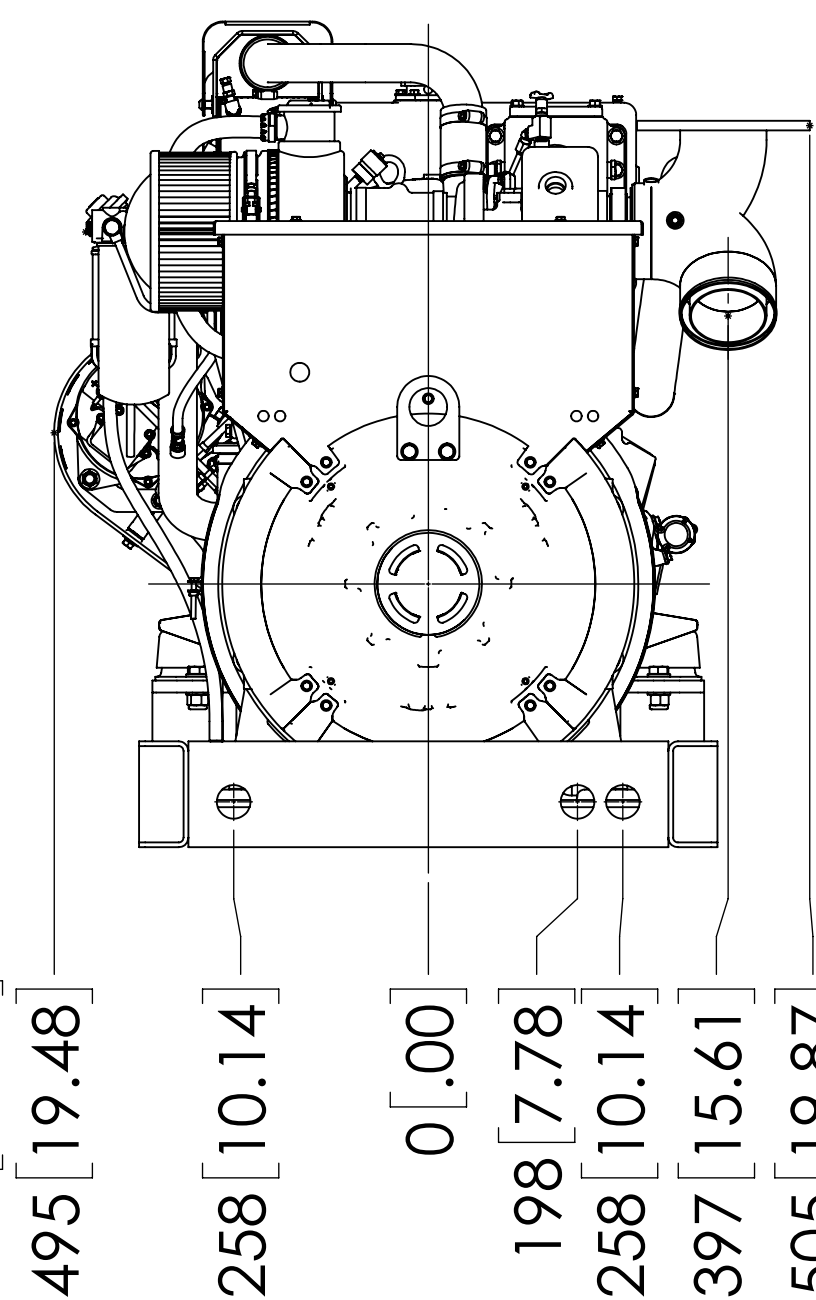
LEFT



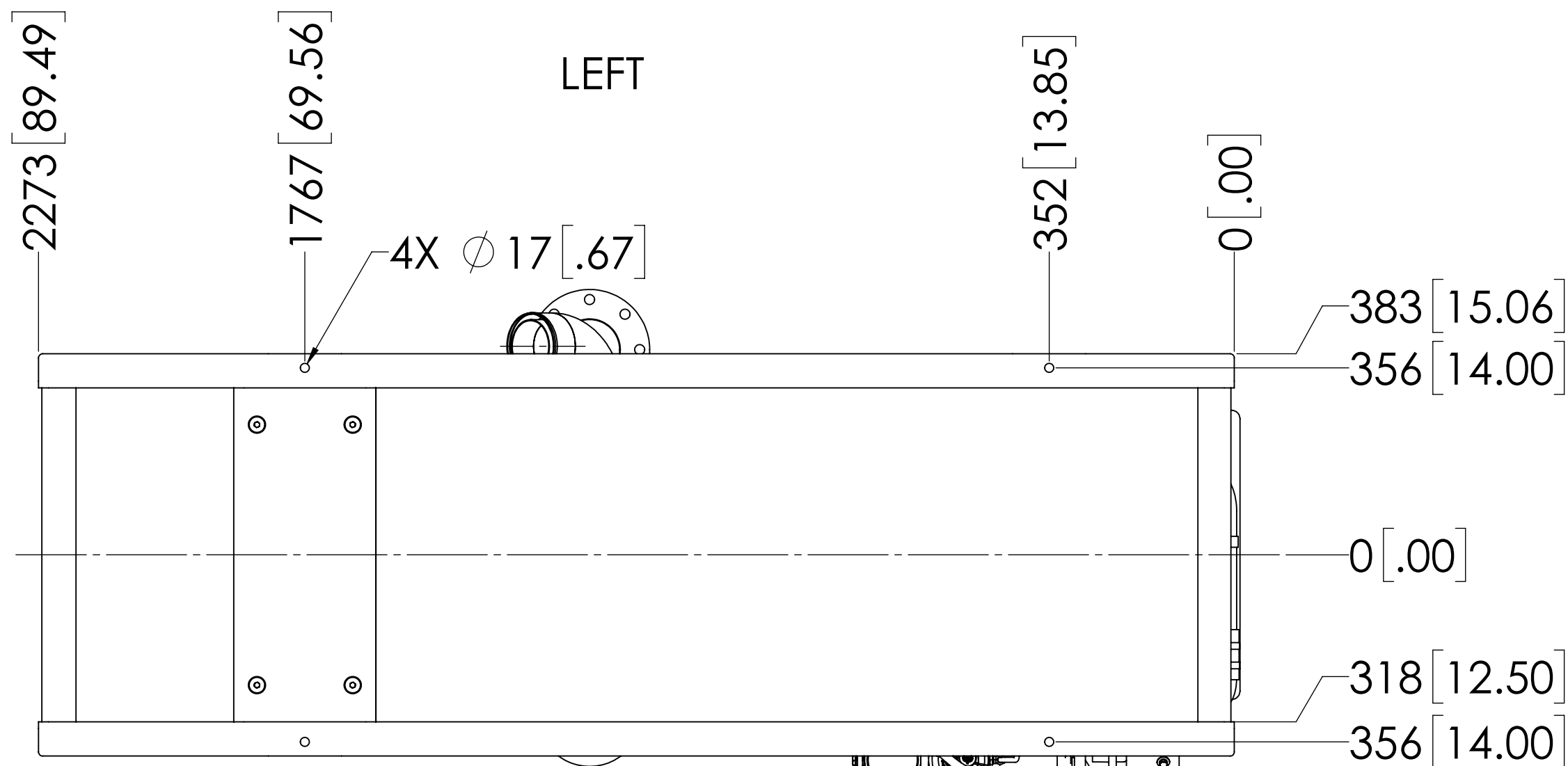
FRONT



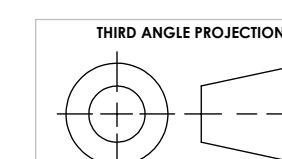
SERVICE SIDE



REAR



BOTTOM



PROPRIETARY AND CONFIDENTIAL
THE INFORMATION CONTAINED IN THIS DRAWING IS THE SOLE PROPERTY OF NORTHERN LIGHTS. ANY REPRODUCTION IN PART OR AS A WHOLE WITHOUT THE WRITTEN PERMISSION OF NORTHERN LIGHTS IS PROHIBITED.

UNLESS OTHERWISE SPECIFIED: DIMENSIONS ARE IN MILLIMETERS TOLERANCES: ANGULAR: MACH \pm 0.5° BEND \pm 1.0° X \pm 0.5 XX \pm 0.3	DRAWN: LTP CHECKED: ENG APPR: MEG APPR: G.A. COMMENTS:	NAME: LTP DATE: 9/28/2023
INTERPRET GEOMETRIC TOLERANCING PER: ASME Y14.5M	FINISH:	
DO NOT SCALE		

NORTHERN LIGHTS
4420 14th AVE. N.W.
Seattle, WA 98107
(206) 789-3880
www.northern-lights.com

TITLE: INSTALLATION DIMENSIONS M6105A1.5		REV
SIZE: D	PART NO.: M6105A1.5	DWG. NO.: D-5572
SCALE: 1:10	WEIGHT:	SHEET 1 OF 1