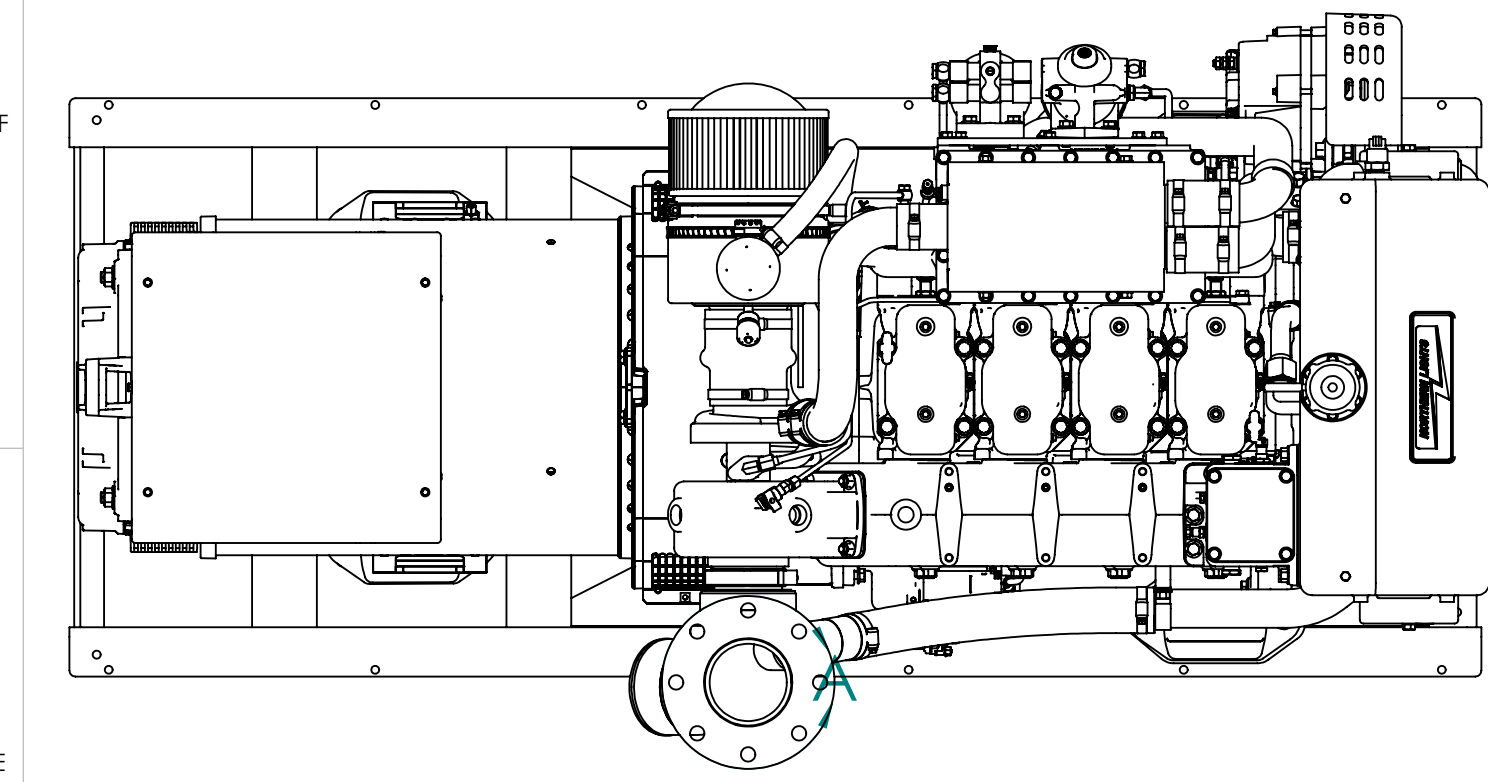


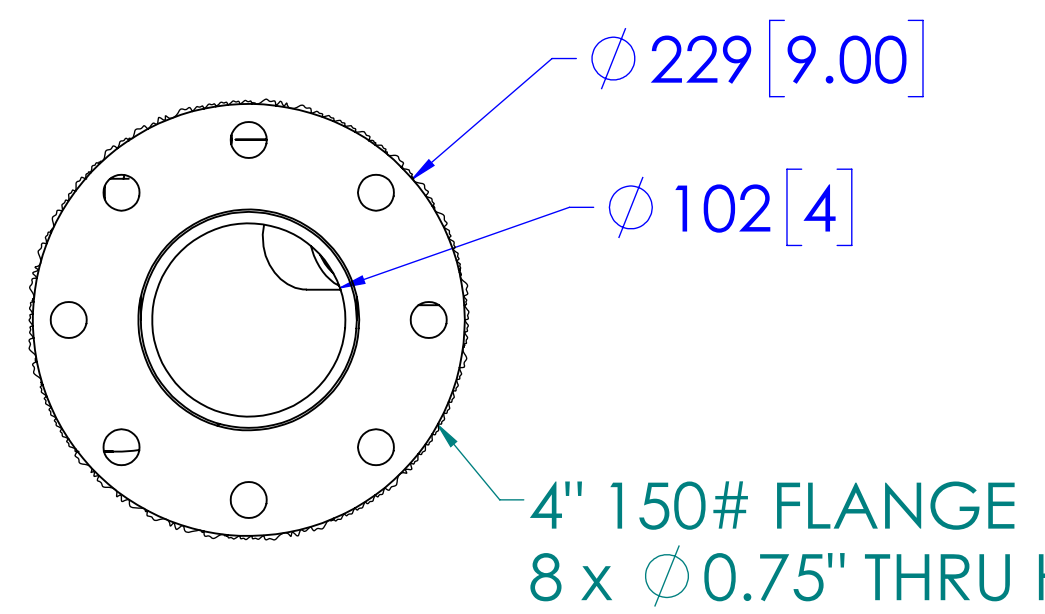
MODEL	DESCRIPTION	APPROX. WT. LBS [kg]
M4105A6.1	145 KW.E @ 1800 RPM (60HZ), HEAT EXCHANGED	2901 [1316]

NOTE: WEIGHT INCLUDES OIL, BUT NO COOLANT. VALUES ARE APPROXIMATIONS AND ARE SUBJECT TO CHANGE. PLEASE CONTACT NLI TO BE SURE YOU HAVE THE LATEST REVISION.

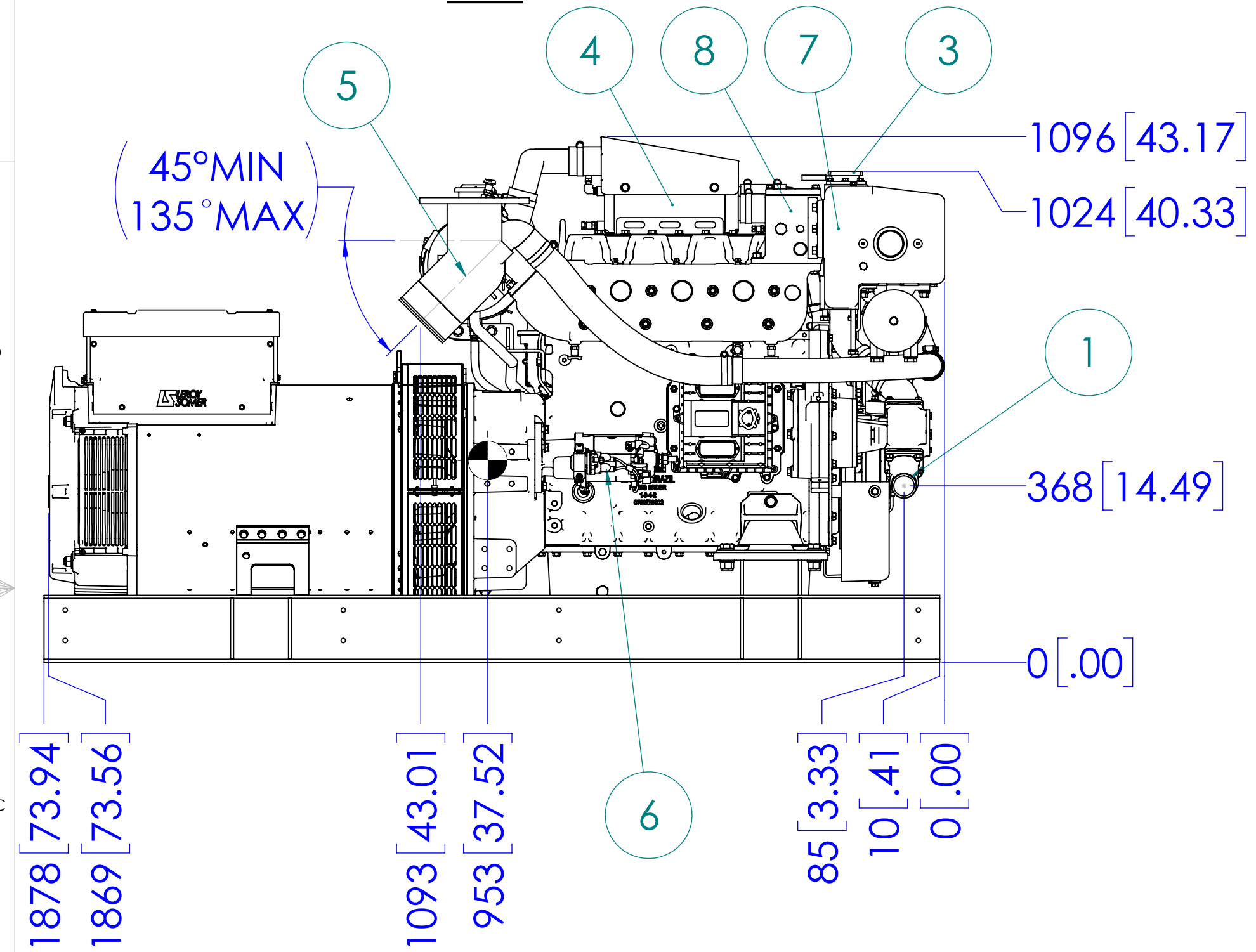
ITEM	DESCRIPTION	ITEM	DESCRIPTION
1	SEAWATER INLET (Ø 2.0 H.B.)	14	ENGINE OIL FILL
2	HEAT EXCHANGER	15	FUEL RETURN PORT (3/8" NPT)
3	COOLANT FILL	16	FUEL SUPPLY PORT (3/8" NPT)
4	AFTERCOOLER	17	OIL DRAIN PORT (1/2" NPT)
5	OPTIONAL WET EXHAUST ELBOW (Ø 5" H.B)	18	ALTERNATOR
6	ELECTRIC STARTER MOTOR (12V STD/ 24V OPT)	19	OPTIONAL DRY EXHAUST ELBOW
7	EXPANSION TANK	20	
8	THERMOSTAT HOUSING	21	
9	FUEL/WATER SEPERATOR	22	
10	PRIMARY FUEL FILTER	23	
11	OIL FILTER	24	
12	AIR FILTER & COALESCING FILTER	25	
13	ENGINE OIL DIPSTICK	26	



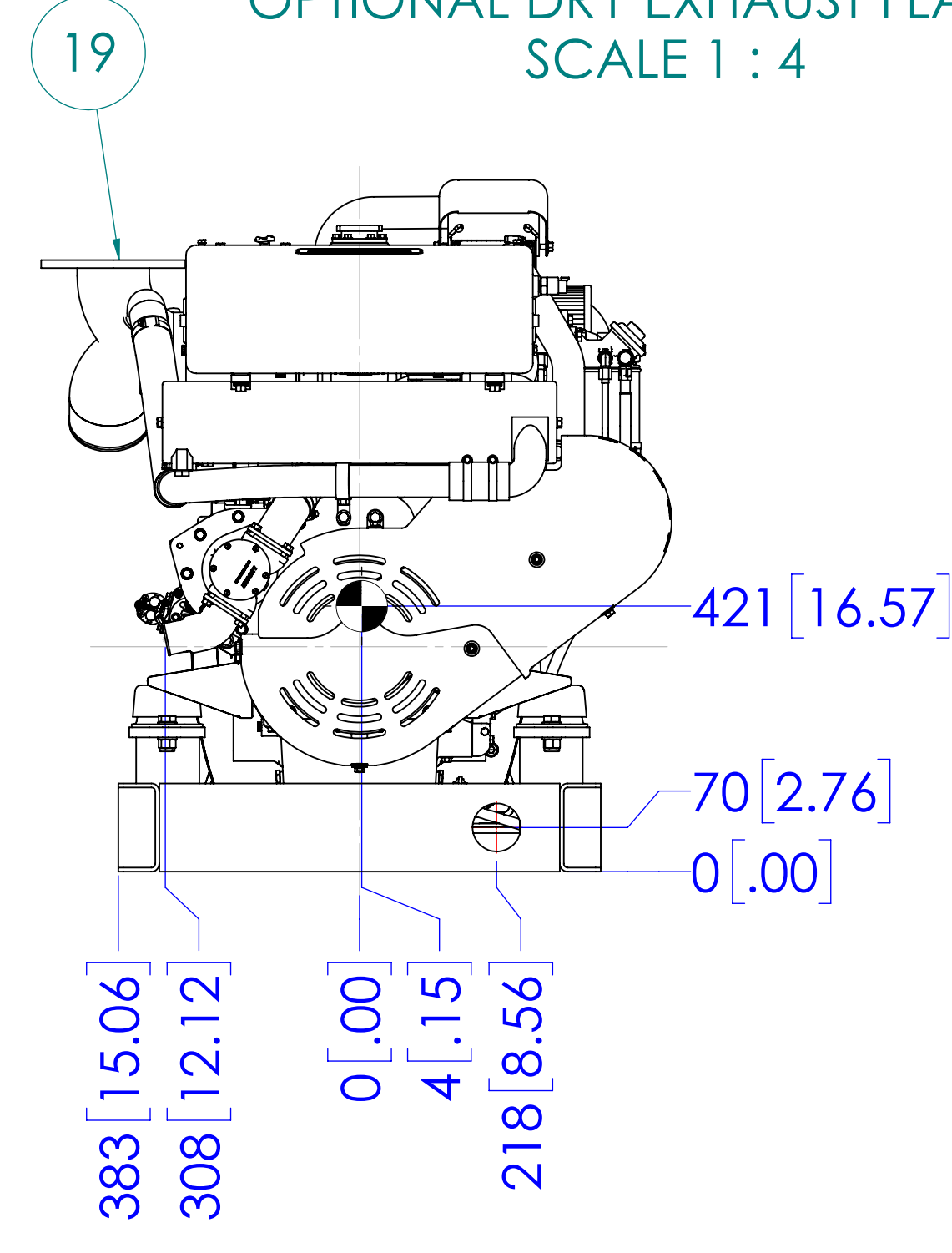
TOP



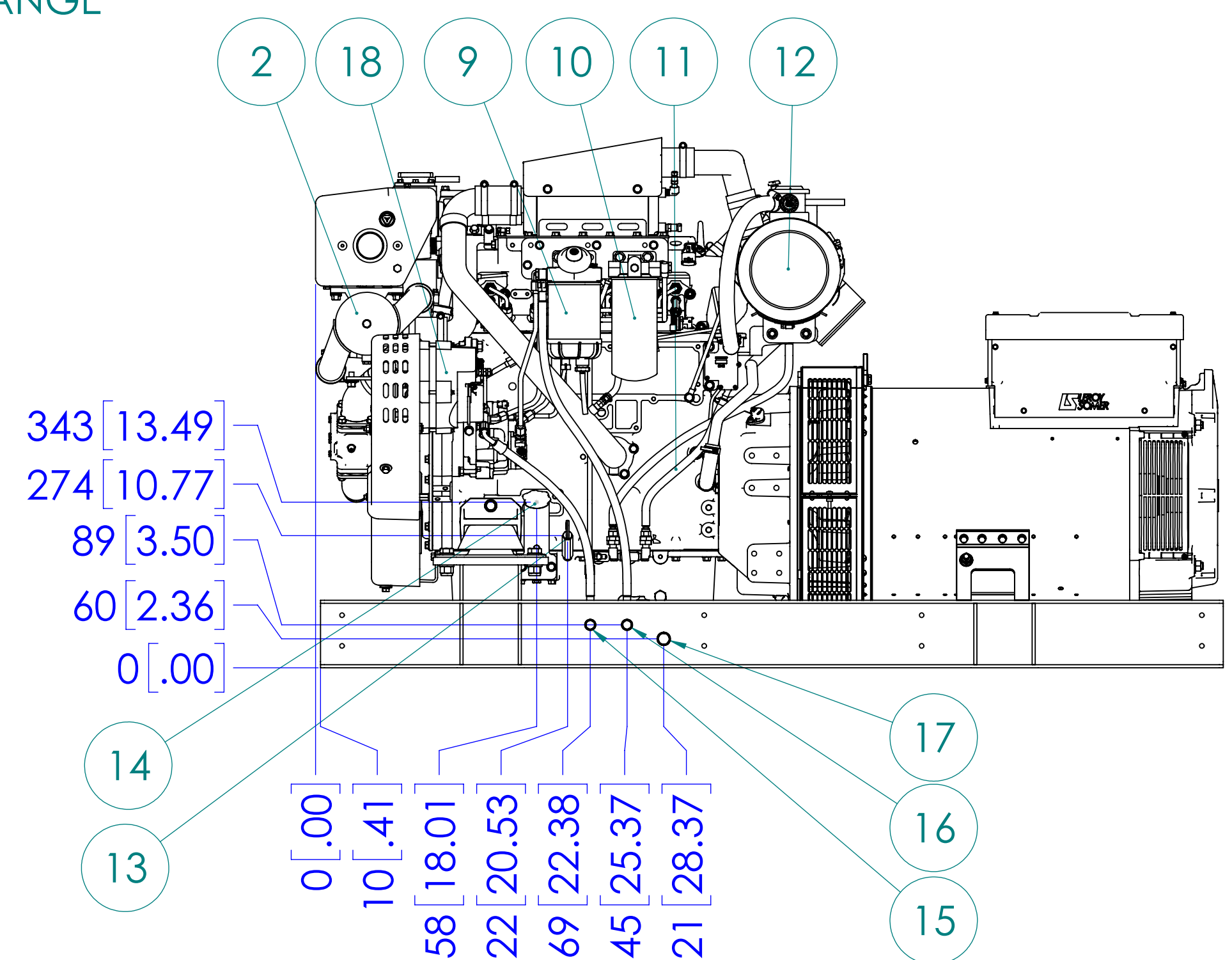
DETAIL A  
OPTIONAL DRY EXHAUST FLANGE  
SCALE 1 : 4



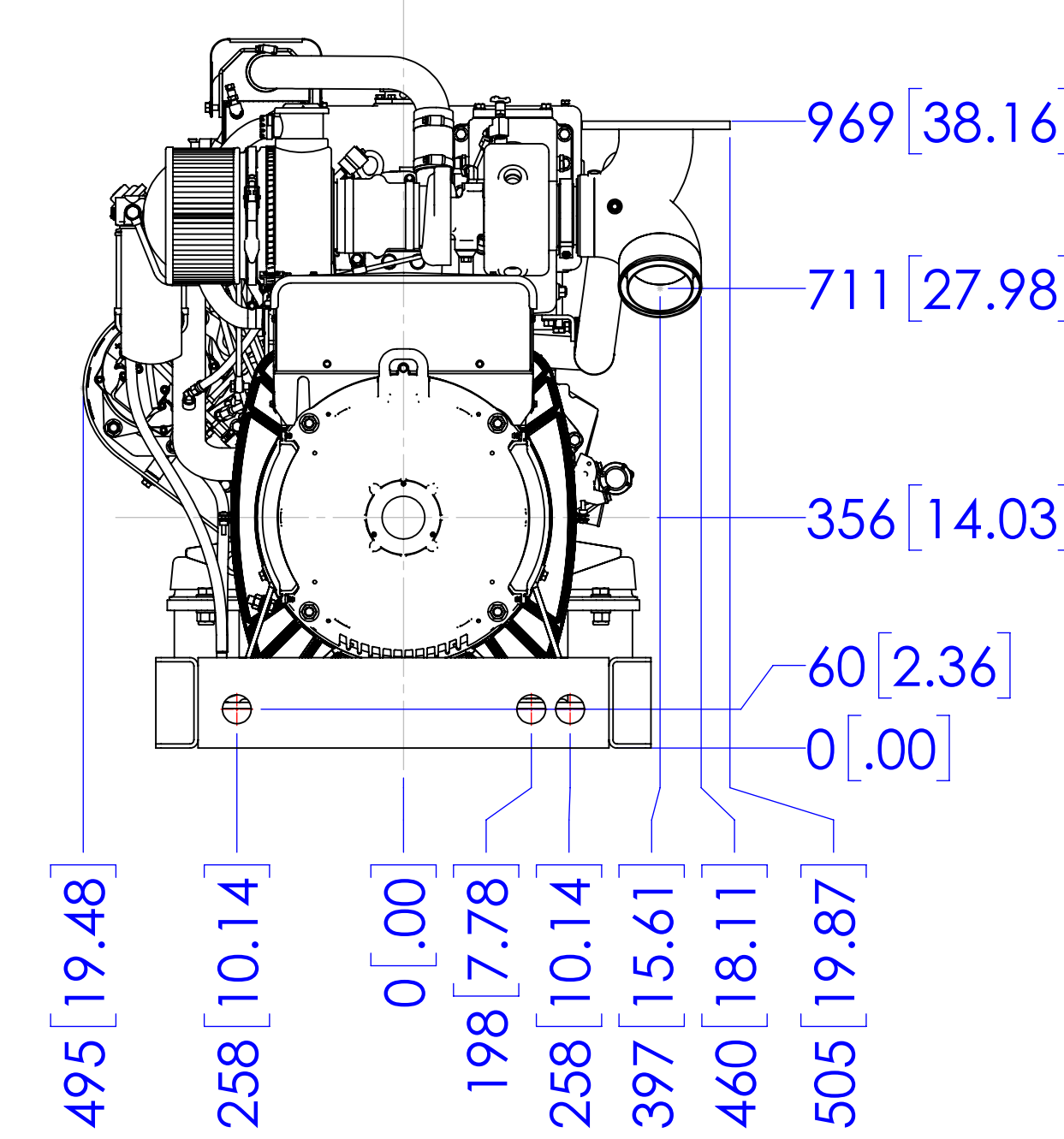
LEFT SIDE



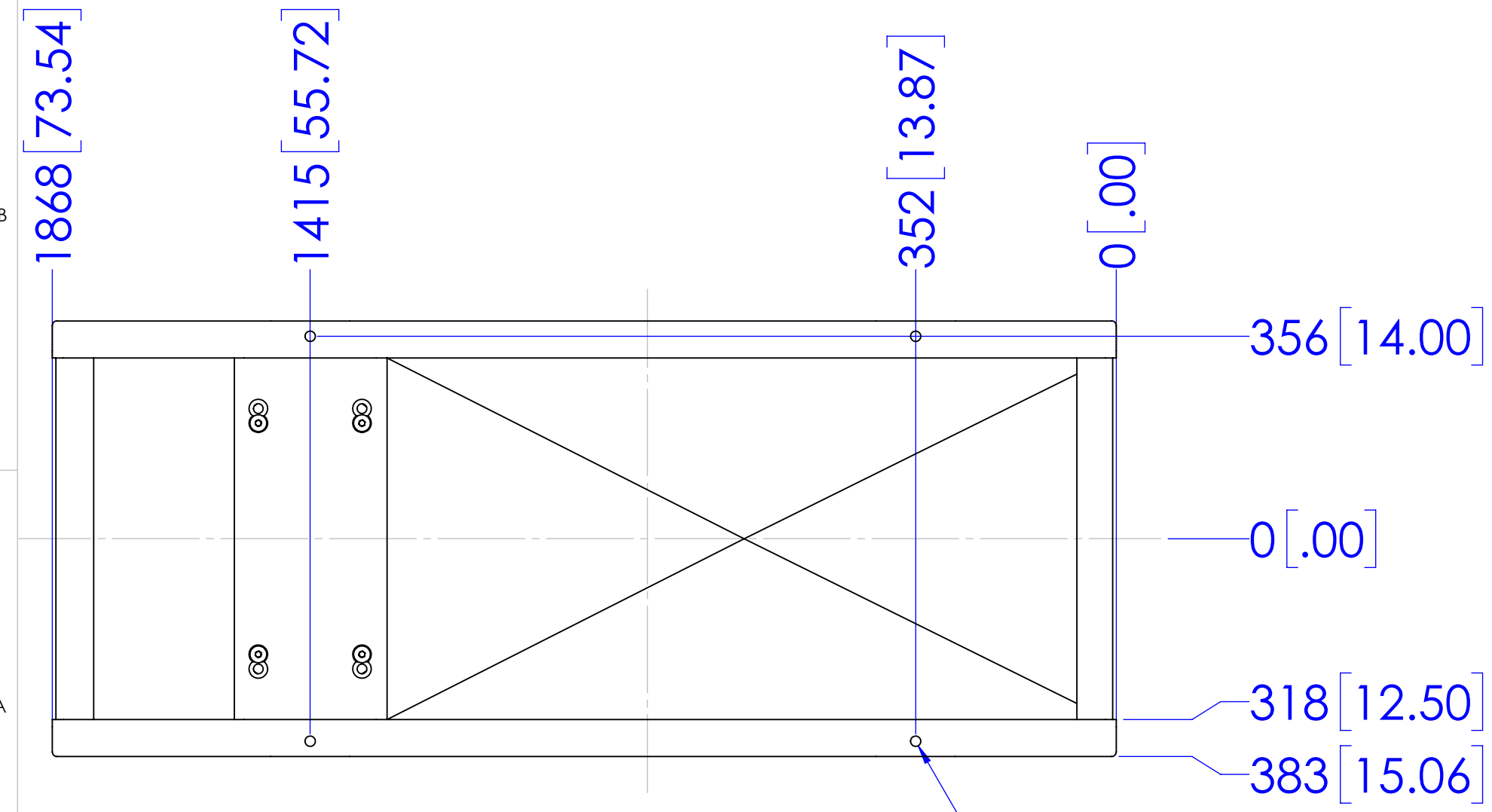
FRONT



SERVICE SIDE

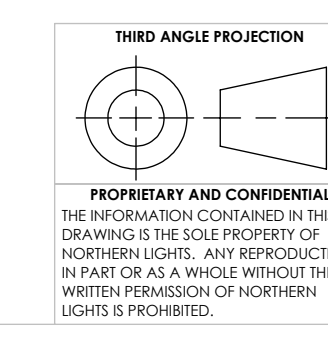


REAR



MOUNTING

4X Ø 18 [0.71] THRU



UNLESS OTHERWISE SPECIFIED:	NAME	DATE
DIMENSIONS ARE IN MILLIMETERS	JPW	7/3/2024
TOLERANCES:	CHECKED	
ANGULAR: MACH ± 0.5° BEND ± 1.0°	ENG APPR.	
.X ± 0.3	MEG APPR.	
.XX ± 0.3	Q.A.	
INTERPRET GEOMETRIC TOLERANCING PER: ASME Y14.5M	COMMENTS:	
MATERIAL:		
FINISH:		
DO NOT SCALE		

**NORTHERN LIGHTS** 4420 14th AVE. N.W. Seattle, WA 98107 (206) 789-3880 www.northern-lights.com

TITLE: INSTALLATION DIMENSIONS M4105A6.1, 60HZ, LSA 44.3 VL14

SIZE	PART NO.	DWG. NO.	REV
D	SEE TABLE	D-5570	
SCALE: 1:10	WEIGHT:	SHEET 1 OF 1	