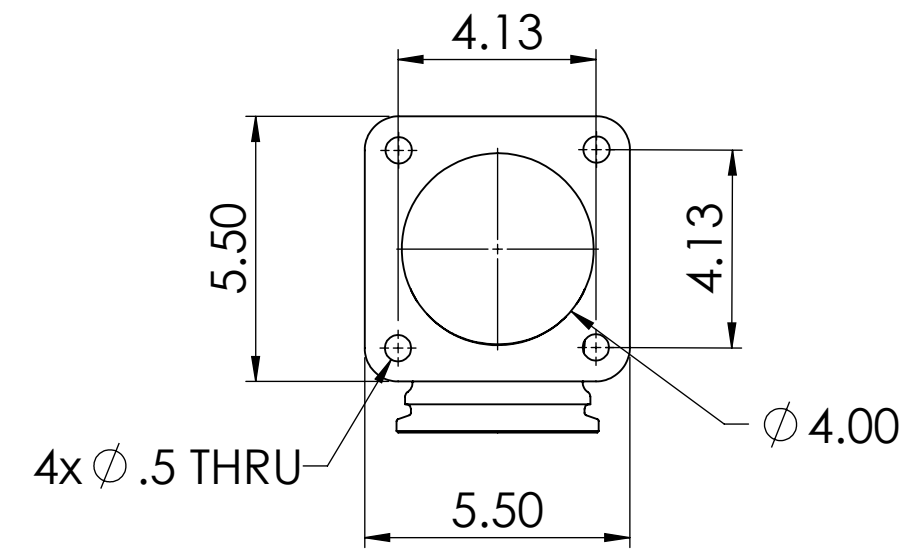
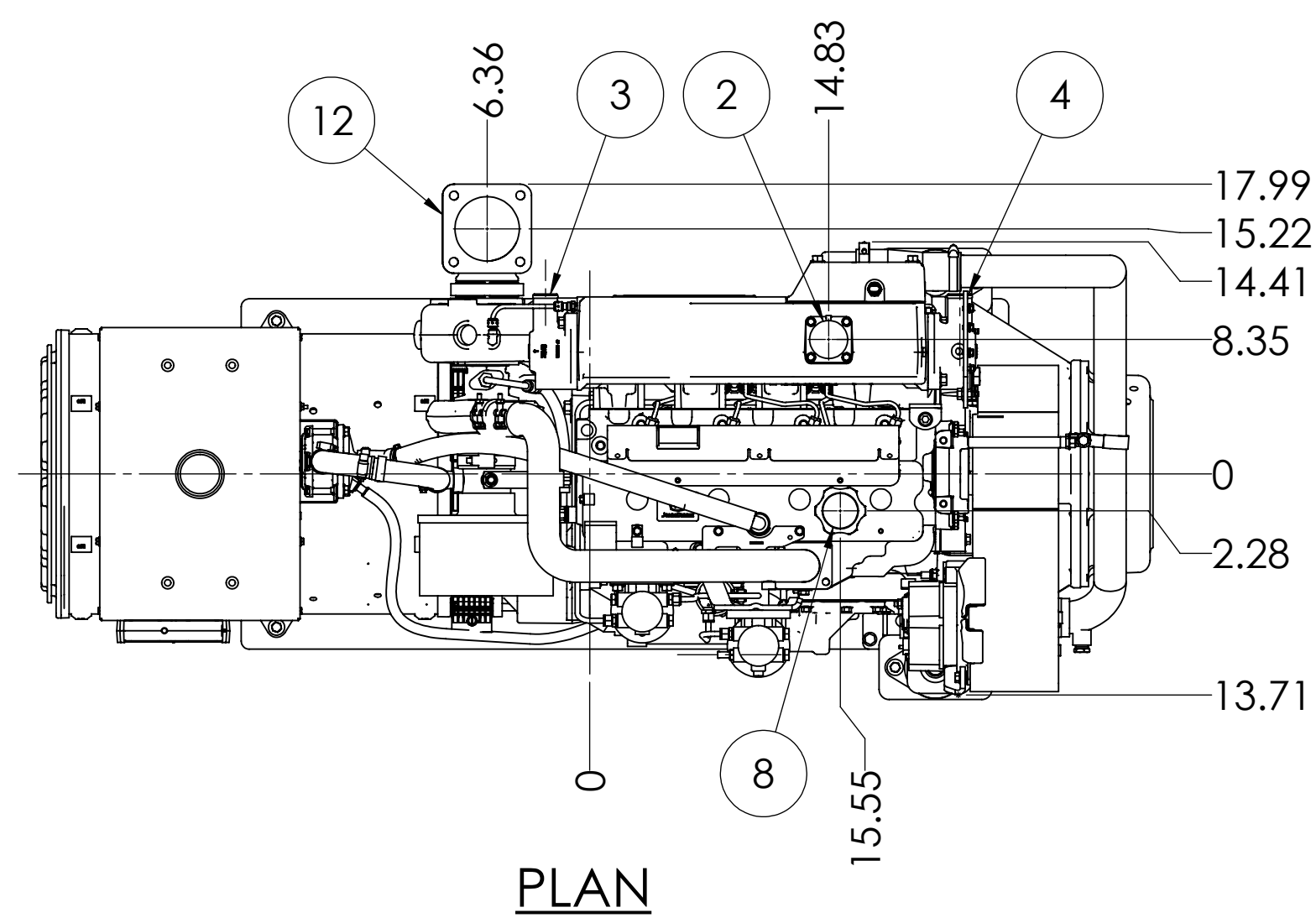
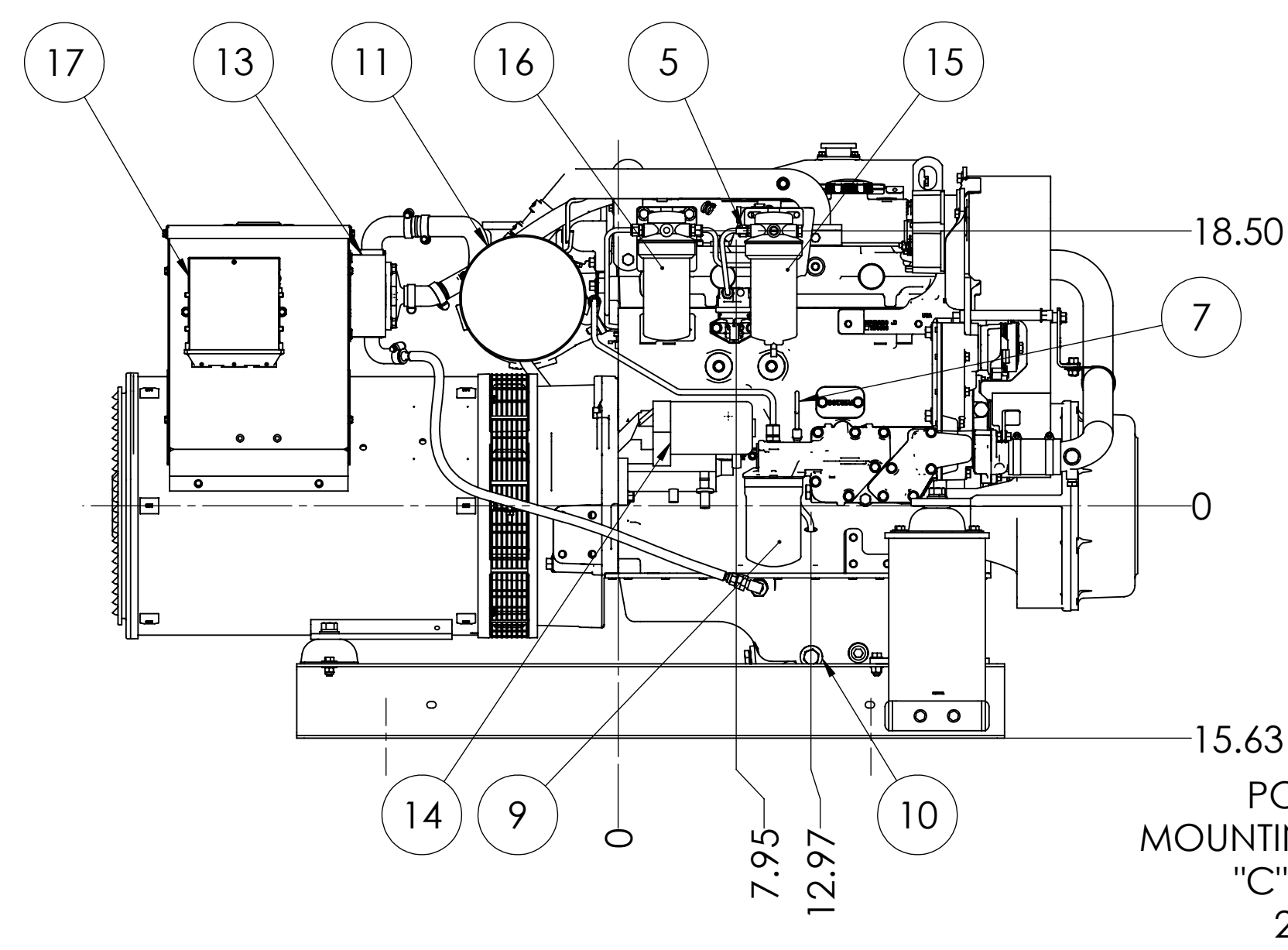


MODELS	APPROX. WT. lbs [kg]
M65C13.21 65kW 1800 RPM 60Hz 3 ϕ	2185 [991]

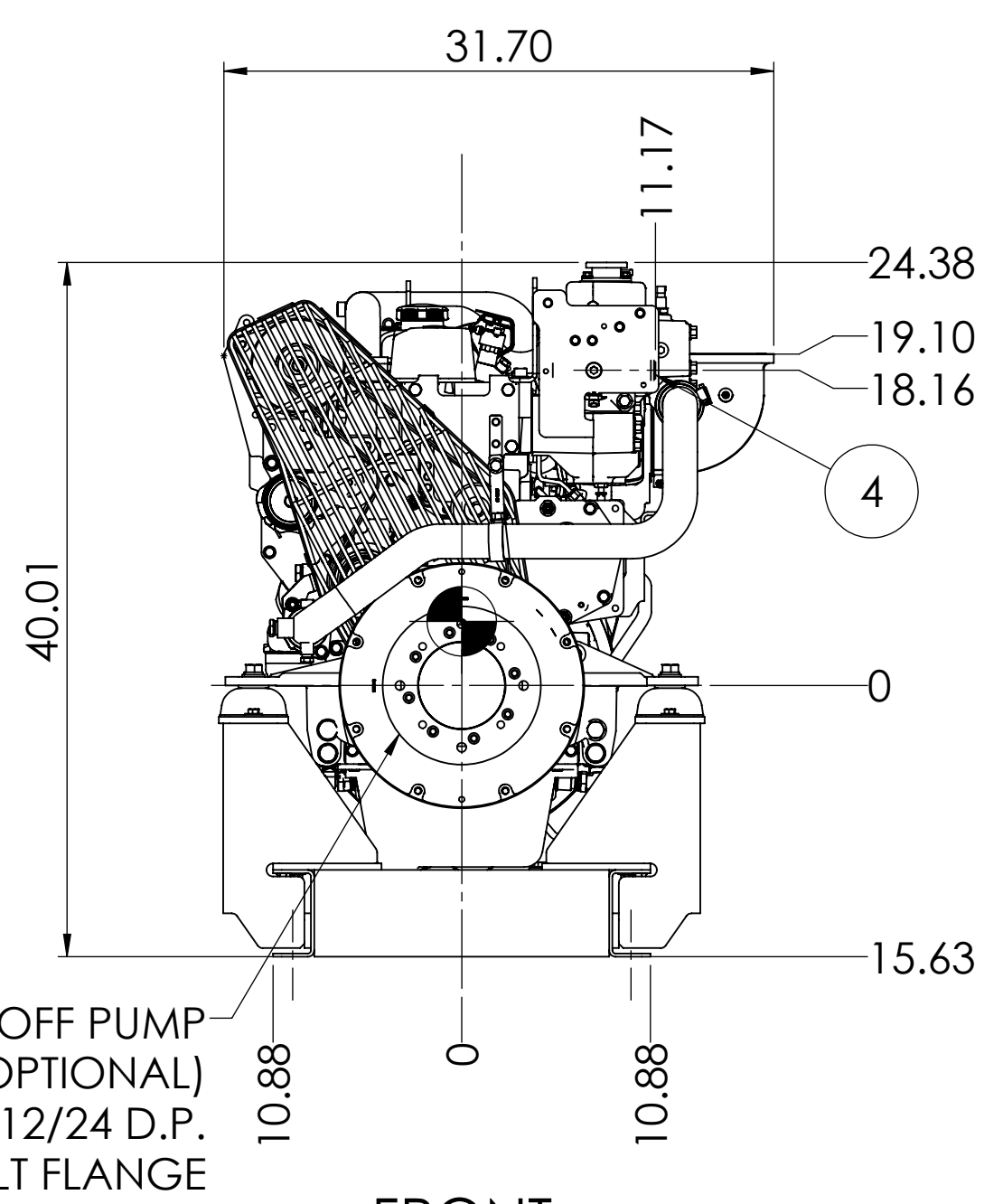
ITEM	DESCRIPTION
1	EXPANSION TANK
2	COOLANT FILL
3	COOLANT INLET ϕ 1.5 H.B.
4	COOLANT OUTLET ϕ 1.5 H.B.
5	FUEL SUPPLY ϕ 3/8 H.B.
6	FUEL RETURN ϕ 1/4 H.B.
7	CRANKCASE OIL DIPSTICK
8	CRANKCASE OIL FILLER
9	CRANKCASE OIL FILTER
10	ENGINE OIL DRAIN - M18x1.5
11	AIR INLET FILTER
12	DRY EXHAUST ELBOW - SEE DETAIL
13	CLOSED CRANKCASE VENTILATION SYSTEM
14	ELECTRIC STARTER
15	PRIMARY FUEL FILTER
16	FINAL FUEL FILTER
17	ENGINE CONTROL UNIT
18	OPTIONAL PMG



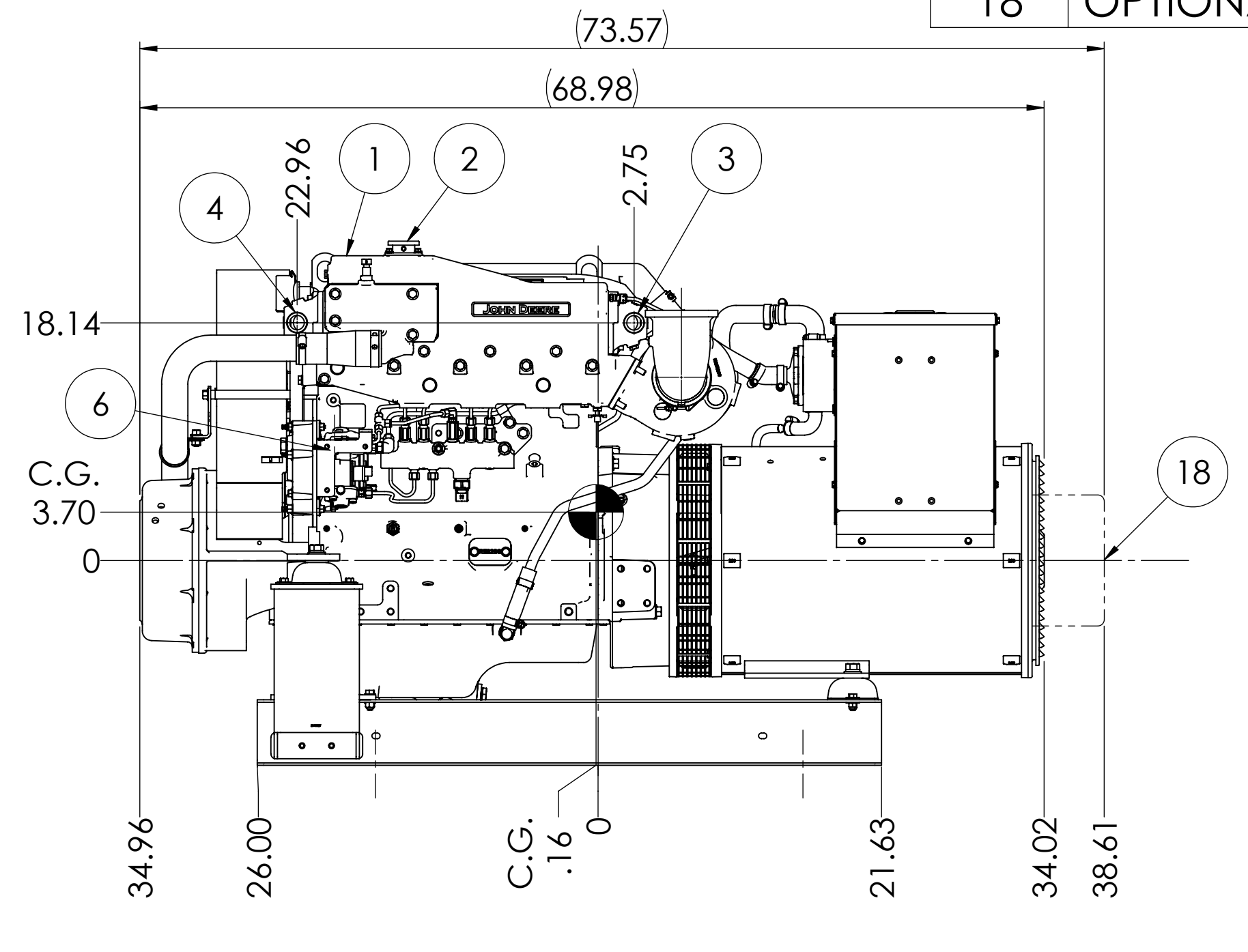
DRY EXHAUST ELBOW FLANGE DETAIL



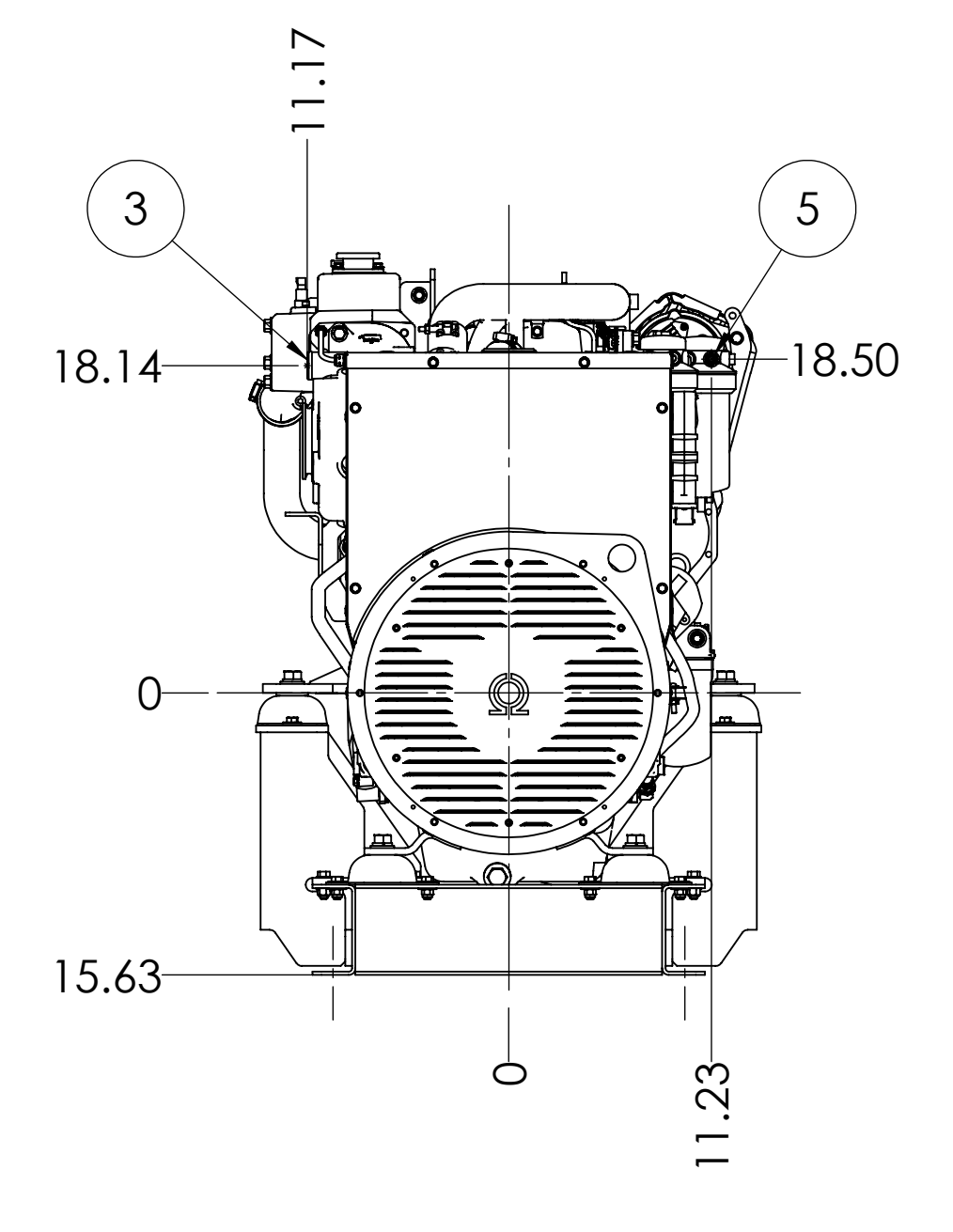
SERVICE SIDE



FRONT

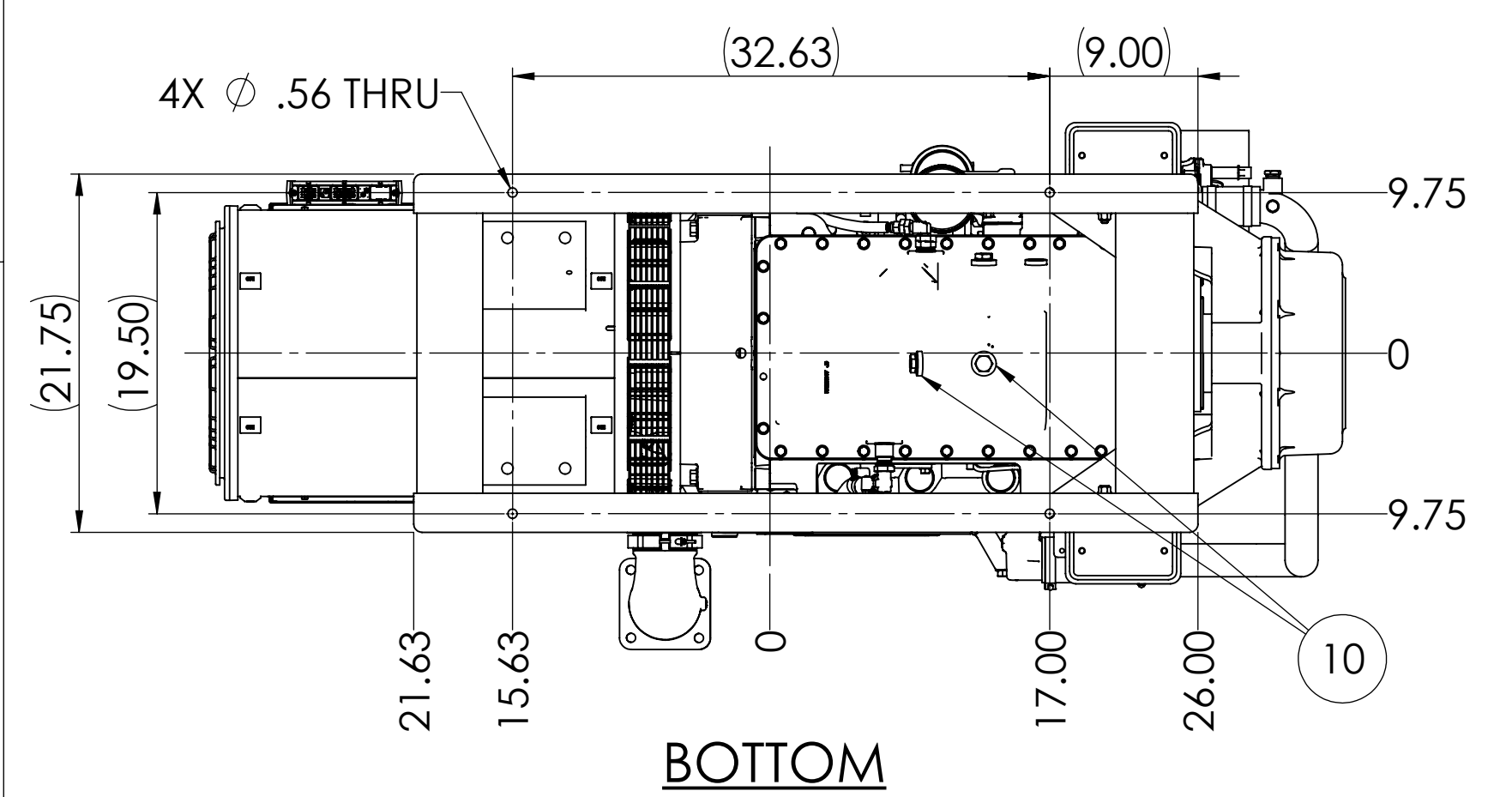


NON-SERVICE SIDE



REAR

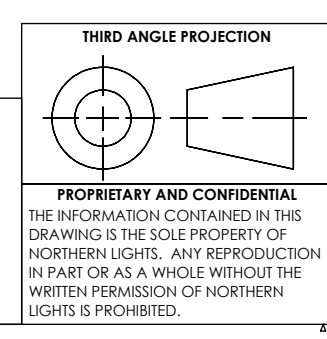
POWER TAKE-OFF PUMP MOUNTING FACE (OPTIONAL)
"C" SPLINE 14T 12/24 D.P.
2 AND 4 BOLT FLANGE



BOTTOM

NOTE: SEE D-5008 FOR INSTALLATION DIMENSIONS OF THE M65C13.21 WITHOUT OPTIONAL PTO.

THE DIMENSIONS ON THIS DRAWING ARE SUBJECT TO CHANGE. PLEASE CONTACT NLI TO BE SURE YOU HAVE THE MOST CURRENT REVISION.



UNLESS OTHERWISE SPECIFIED: DIMENSIONS ARE IN INCHES TOLERANCES: ANGULAR: .5° HORIZONTAL: .015 VERTICAL: .010 FINISH: AS FURNISHED	NAME: MG DATE: 03/28/17
INTERPRET GEOMETRIC TOLERANCING PER: ASME Y14.5M	DRAWN: MG CHECKED: [blank] ENG APPR: [blank] MEG APPR: [blank] G.A.: [blank] COMMENTS: [blank]
DO NOT SCALE	

 4420 14th AVE. N.W. Seattle, WA 98107 (206) 789-3880 www.northern-lights.com	
TITLE: INSTALLATION DIMENSIONS M65C13.21 WITH OPTIONAL PTO	
SIZE: D	PART NO. [blank]
DWG. NO. D-5009	REV [blank]
SCALE: 1:10	WEIGHT: LBS. [blank]
SHEET 1 OF 1	

D-5009